

**KYB**

*Our Precision, Your Advantage*

# e-MIXER RX



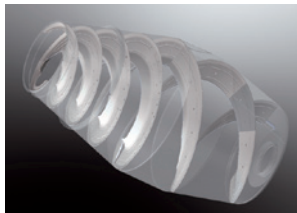
# e-MIXER RX



## KYB e-Control Hydraulic Unit

Computerized control for optimized engine rotation

The e-MIXER RX is the world's first concrete mixer to incorporate a computer-controlled hydraulic transmission system, which allows rapid drum rotation without increasing engine speed.



This reduces fuel consumption over 10% compared with conventional concrete mixer trucks for wet concrete. Lowering the engine speed also substantially reduces the noise level.

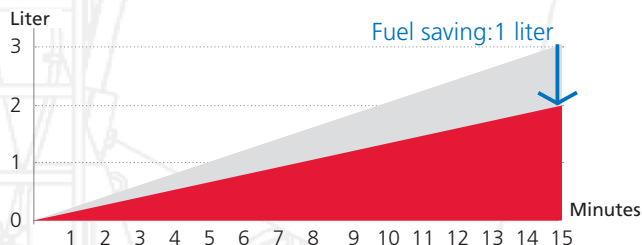
This innovative system won the 2007 Japan Machinery Federation Chairman's Award for Excellence in Energy Efficiency and Conservation.

Compared to the standard type, the e-MIXER RX saves approximately one liter of fuel per truckload.

Assumptions: Duration of drum rotation at high speed (Mixing: 6 minutes; Mixing at construction site: 2 minutes; Washing after delivery: 3 minutes; Washing after return to truck yard: 3 minutes)

The e-MIXER RX saves approximately 720 liters of fuel annually.

Assumptions: (3 castings/day, 20 days/month, 12 months/year)



## Outstanding Mixing and Durability

The e-MIXER RX uses unique mixer blades, designed after many years of research. The blades can thoroughly mix concrete without rotating at a high speed. Made of rugged high-tensile-strength steel developed by a Japanese steelmaker specifically for this application, using this steel increases the drum's working life. Furthermore, the design minimizes the truck's weight.



## Enhanced Operability

A computer monitors the e-MIXER RX's status to prevent accidental concrete discharge. If the operator attempts to move the truck during discharge, the drum's rotation is automatically switched off, stopping the concrete discharge.

## Semi Auto-Clean Function for Drum

Manually input a certain amount of water and press a single button to automatically rotate the drum clockwise and anticlockwise. (The number of rotations and amount of water for cleaning can be set.)

## Auto-Mixing Function

At the delivery site, the operator can press one button to perform the pre-determined mixing prior to discharge. The number of drum rotations and rotating time can be set. (Timed operation is also possible for wet mixing.)

# High Fuel Efficiency + Low Environmental Impact

KYB is Japan's largest manufacturer of concrete mixers, with a market share of more than 80%. Using its advanced technologies, KYB has developed an electronically controlled model with a 7.5m<sup>3</sup> drum.



## Standard Equipment to Meet the Requirements of Any Site

The e-MIXER RX comes with four extension chutes, an aluminum rear ladder, rear steps, digital slump monitor, emergency stop button, water meter, and other standard equipment to meet the requirements of almost any delivery site.



## New Easy-to-Use Controller

Standard equipment with a radio and wired controllers for ease of use.



◀ Button-Type Radio Controller

Single-Hand Wired Controller ▶

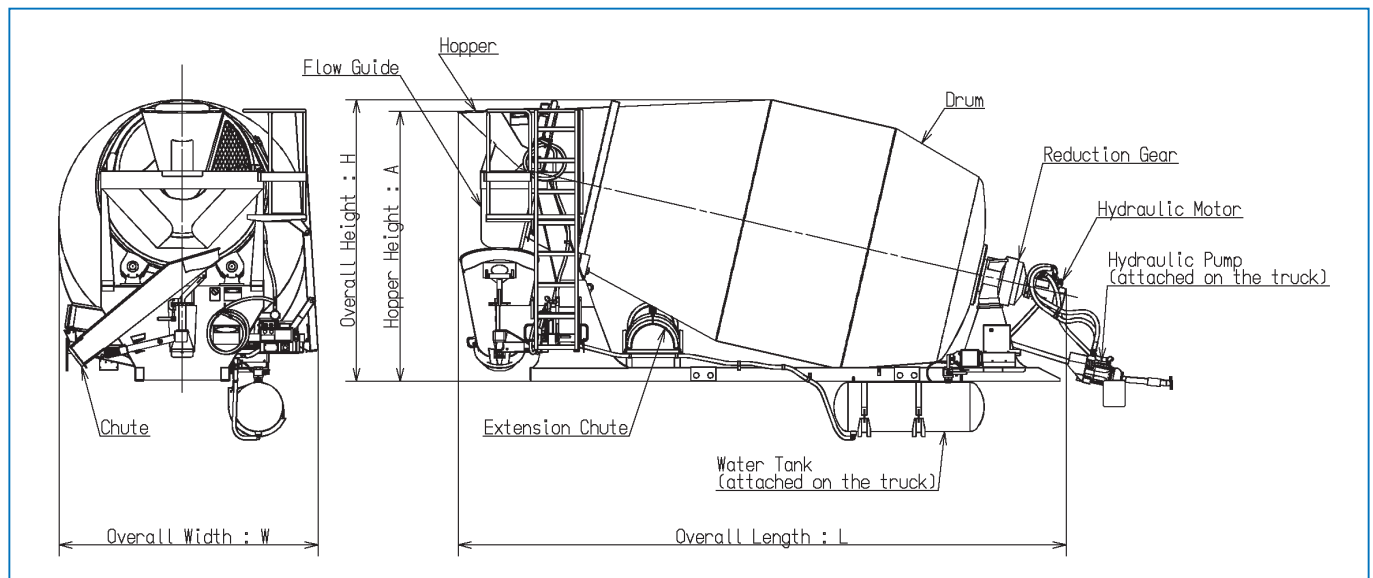


## Cab Controller Console

The operator can select a special mode for concrete discharge while the vehicle is moving. (A warning light flashes during this mode to alert the driver.) In addition, a buzzer sounds while concrete is discharging.



## Appearance Dimensions



## Specifications

Model		MR7500RX	
Mixer Dimensions (approx.)	Overall Length	:L (mm)	5,580
	Overall Width	:W (mm)	2,380
	Overall Height	:H (mm)	2,580
	Hopper Height	:A (mm)	2,480
	Mixer Weight	(kg)	3,000
Container (approx.)	Drum Volume	(m <sup>3</sup> )	12.3
	Mixing Capacity	(m <sup>3</sup> )	7.5
Drum Rotation	Charging	(r.p.m)	6-17
	Mixing	(r.p.m)	10-17
	Agitation	(r.p.m)	0.6-2.5
	Discharging	(r.p.m)	6-10
Hydraulics	Pump		KYB
	Motor		KYB
Gear	Gearbox		BONFIGLIOLI TRASMITAL
Control System	Feature		Button-Type Radio Controller × 1 Single-Hand Wired Controller × 1 Cab Controller Console × 1
	Operation Place		3 places
Hopper (approx.)	Operating Size	(mm)	750 × 750
Chute (approx.)	Length of Main Chute	(mm)	1,750
	Length of Extension Chute	(mm)	780 × 3 + 400 × 1
Water Tank (approx.)	Volume	(L)	200
	Set Pressure	(MPa)	2.0



### KYB Corporation

<http://www.kyb.co.jp/english/>

#### Head Office

World Trade Center Bldg., 4-1,  
Hamamatsu-cho 2-chome,  
Minato-ku, Tokyo 105-6111, Japan  
Tel: 81-3-3435-3511 Fax: 81-3-3436-6759

#### Kumagaya Plant

2050 Nagazaiki, Fukaya-shi,  
Saitama 369-1193 Japan  
Tel: 81-48-583-2341 Fax: 81-48-583-5603

All of KYB's plants have acquired ISO 14001, the globally recognized standard for environmental management.